

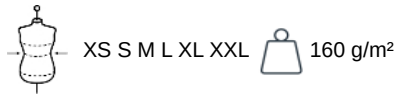
KARIBAN

K509

Ladies' Denim shirt

- Fashion slim fit.
- Soft and comfortable fabric.
- Trendy denim effect.

100% cotton. Denim-effect light fabric. Soft and comfortable fabric. Fashion slim fit. Decorative inner collar band. Contrast buttons. Adjustable cuffs. This product has been specially treated and appears intentionally aged. This manufacturing process results in colour variations between products and makes each piece unique.



More information

Logistic



BD - Bangladesh

Customs code



62063000

Also available in version



K512



Chambray
Blue

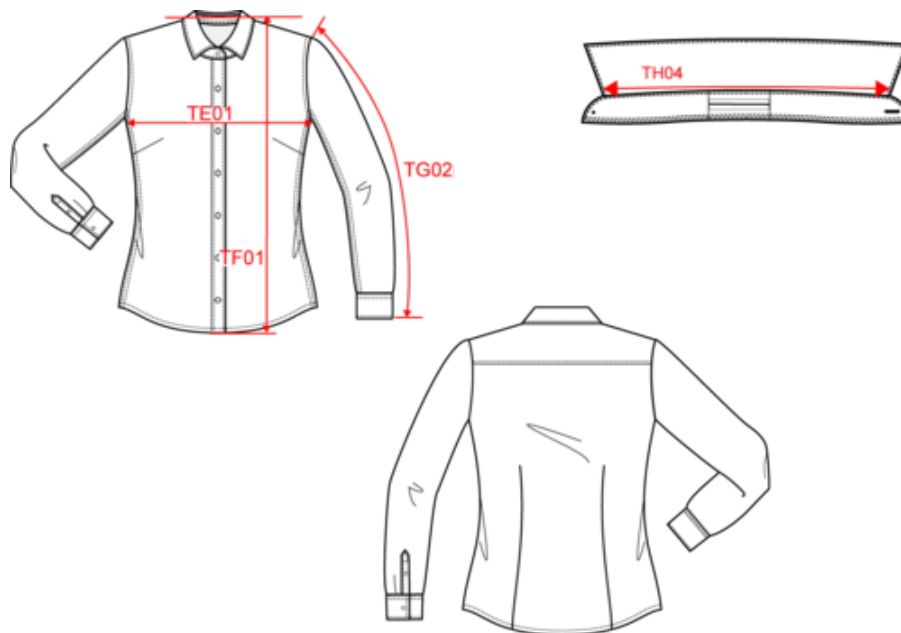


KARIBAN

K509

Ladies' Denim shirt

Dimensions (cm)




Measurements in cm	XS	S	M	L	XL	XXL
TE01 - 1/2 chest width at 1.5cm below armhole	44.50	47.50	50.50	53.50	56.50	59.50
TF01 - Total height from HSP	63.50	65.50	67.50	69.50	71.50	73.50
TG02 - Long sleeve length	60.00	61.00	62.00	63.00	64.00	65.00
TH04 - Neckline length on collar from middle to middle	36.35	37.55	38.75	39.95	41.15	42.35

KARIBAN

K509

Ladies' Denim shirt

Colours information

 Chambray Blue

RVB : 46,111,180
Pantone C : 2139C
Pantone TCX : 18-3922TCX

Logistic



1



12

Sizes	Width (cm)	Height (cm)	Length (cm)	Net weight (kg)	Gross weight (kg)	Pieces/Box	Pieces/Bundle
XS	40.00000	19.00000	60.00000	3.20000	4.83000	12	0
S	40.00000	19.00000	60.00000	3.34000	4.97000	12	0
M	40.00000	19.00000	60.00000	3.47000	5.10000	12	0
L	40.00000	19.00000	60.00000	3.66000	5.29000	12	0
XL	40.00000	19.00000	60.00000	3.78000	5.41000	12	0
XXL	40.00000	19.00000	60.00000	3.97000	5.60000	12	0